

Congratulations on buying Dirtsack Luggage!

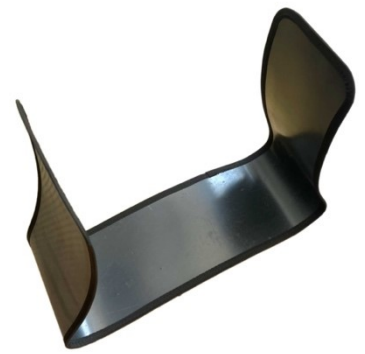
Gypsy Setup instructions:

Unpack and expand the bag loosely.

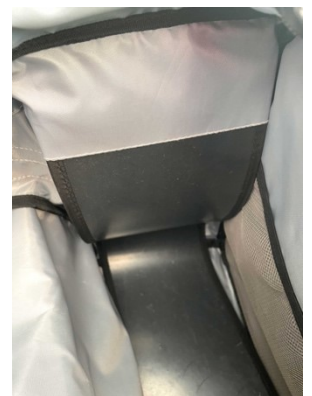
Separate the two fibre stiffeners and open them out into a "U" shape.



The stiffeners fit into the base at each side by tucking the ends into the fabric pocket half way up on each side.



When correctly in place the ends of the bag should be more rigid. The fibre stiffeners may take a little while to adjust from their flat packed state to the new shape but will settle once the bags have been packed.



To attach to the bike simply place the bag over the pillion seat or rear rack wherever you find most appropriate. Important – check that no part of the Gypsy will come into direct contact with the exhaust – if it does you will need to fit a heat shield.

Next remove the four anchor belts by pulling them out from the buckles. The belts have a stitched loop at one end and are cut to a diagonal at the other.



Find a suitable anchor point on your bike, frame or pillion footpeg etc. Pass the belt around the anchor point then thread the diagonal cut end through the loop and pull tight to secure.



Next choose the upper or lower buckle on the Gypsy whichever seems best for your anchor point, and then thread the end through the buckle, upper part first then down through the lower on at the front.

Do not pull it tight yet, repeat with the other three straps until they are all secured loosely. Next tighten down the straps in turn a little at a time until the Gypsy is securely fastened.



Finally slide the elastic bands to secure any loose long ends and make sure nothing will flap around as you ride.

That's it – you're ready for your trip!

Thank you for choosing Dirtsack Luggage

<https://www.jaqtrading.co.uk/>